



Workshop 1

How Technology is Transforming Airport Planning

Faith Varwig, Faith Group, LLC

February 23, 2011

Industry Changes

How has IT changed the Master Planning Process?

- ⦿ Adds another discipline
- ⦿ Adds significant capital costs
- ⦿ “Necessary evil” to support operations
- ⦿ Provides additional alternatives
- ⦿ Allows greater flexibility in facility use
- ⦿ Supports sustainability goals by reducing operating costs and improving efficiencies

Changing the Mindset

Technology is part of the airport's core infrastructure!

Physical	Fiber Copper Rooms Data Ports Networks
Data	Location Size Capacity Maintenance Costs

Most airports plan to make reducing operational costs their No. 1 priority for IT investment.

SITA 2010 – Airport IT Trends Survey

Planning Relationships

“Form follows function.” –Louis Sullivan

Airport Planning	Technology Elements
Flight schedules	Common or mixed-use facilities
Airline/aircraft mix	Ownership of technology systems
Passenger flow	Check-in and security equipment locations
Revenue projections	Shared tenant services
Physical relationships	Infrastructure size and capacity
Phased growth	Flexible, open architecture
Sustainability	Consolidation, virtualization, executive dashboard
Total cost of ownership	Reliability, risk mitigation, redundancy

3 Key Elements

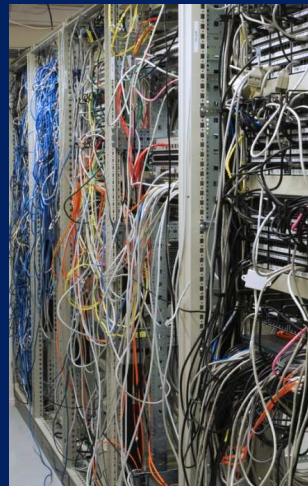
Integrate IT into the Planning Process

- ◎ **Passenger Facing Systems/Services**
 - Accurate data, simplified processing, technology services, ease of use
- ◎ **Physical Infrastructure**
 - Rooms, infrastructure right of ways, fiber, copper, networks
- ◎ **Airport Stakeholder**
 - Cost, system monitoring and control, data management

Passenger



Physical Infrastructure



Stakeholder



Summary

Technology can help you or hinder you

- ⦿ Lack of focus on overarching airport goals
- ⦿ Tendency to overcomplicate
- ⦿ Reluctance to change silo mentality
- ⦿ “Too many cooks in the kitchen”
- ⦿ Mapping technology programs to airport growth
- ⦿ Involving technology to help solve physical facility problems
- ⦿ Adoption of integrated planning approach